



DEA No. RA0571996
FL License # CMTL-0003
CLIA No. 10D1094068

Certificate of Analysis

Compliance Test

D8 ORGANICS LLC
567 S HOLLYWOOD RD
HOUMA, LOUISIANA 70360

Batch # 000000439
Batch Date: 2022-07-19
Extracted From: Industrial Hemp

Test Reg State: Florida

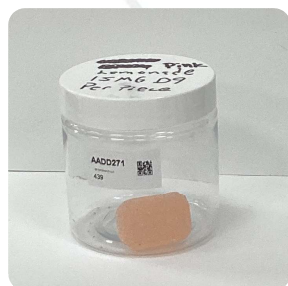
Production Facility: 318 Labz LLC
Production Date: 2022-07-19

Order # D80220719-040001
Order Date: 2022-07-19
Sample # AADD271

Sampling Date: 2022-07-22
Lab Batch Date: 2022-07-22
Completion Date: 2022-07-26

Initial Gross Weight: 30.959 g
Net Weight: 6.259 g

Number of Units: 1
Net Weight per Unit: 6259.000 mg



Product Image

Potency
Tested



Potency 10

Specimen Weight: 1512.600 mg

Tested
SOP13.001 (LCUV)

Analyte	Dilution (1:n)	LOD (%)	LOQ (%)	Result (mg/g)	(%)
Delta-9 THC	100.000	1.30E-5	0.002	2.190	0.219
CBN	10.000	1.40E-5	0.002	0.040	0.004
THCV	10.000	7.00E-6	0.002	0.020	0.002
CBD	10.000	5.40E-5	0.002	0.020	0.002
THCA	10.000	3.20E-5	0.002		<LOQ
CBGA	10.000	8.00E-5	0.002		<LOQ
CBG	10.000	2.48E-4	0.002		<LOQ
CBDV	10.000	6.50E-5	0.002		<LOQ
CBDA	10.000	1.00E-5	0.002		<LOQ
CBC	10.000	1.80E-5	0.002		<LOQ



Potency Summary

Total THC 0.219%	13.710mg	Total CBD 0.002%	0.130mg
Total CBG None Detected		Total CBN 0.004%	0.250mg
Other Cannabinoids 0.002%	0.130mg	Total Cannabinoids 0.227%	14.210mg

Xueli Gao Lab Toxicologist
Ph.D., DABT

Aixia Sun Lab Director/Principal Scientist
D.H.Sc., M.Sc., B.Sc., MT (AAB)



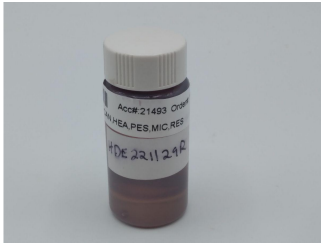
Definitions and Abbreviations used in this report: Total CBD = CBD + (CBD-A * 0.877), *Total CBDV = CBDV + (CBDVA * 0.87), Total THC = THCA-A * 0.877 + Delta 9 THC, Total THCV = THCV + (THCVA * 0.87), CBG Total = (CBGA * 0.877) + CBG, CBN Total = (CBNA * 0.877) + CBN, Total CBC = CBC + (CBCA * 0.877), Total THC-O-Acetate = Delta 8 THC-O-Acetate + Delta 9 THC-O-Acetate, Other Cannabinoids Total = Total Cannabinoids - All the listed cannabinoids on the summary section, Total Detected Cannabinoids = Delta 8 THCA + Delta 9 THCA + Delta 8-THC + Total CBN + CBT + Delta 8-THCV + Total CBD + Total THCV + CBL + Total THC + Total CBC + Total CBDV + Delta 10-THC + Total THC-O-Acetate, Analyte Details above show the Dry Weight Concentrations unless specified as 12% moisture concentration. (mg/ml) = Milligrams per Milliliter, LOQ = Limit of Quantitation, LOD = Limit of Detection, Dilution = Dilution Factor (ppb) = Parts per Billion, (%) = Percent, (cfu/g) = Colony Forming Unit per Gram (cfu/g) = Colony Forming Unit per Gram, LOD = Limit of Detection, (µg/g) = Microgram per Gram (ppm) = Parts per Million, (ppm) = (µg/g), (aw) = aw (area ratio) = Area Ratio, (mg/Kg) = Milligram per Kilogram, *Measurement of Uncertainty = +/- 10%

This report shall not be reproduced, without written approval, from ACS Laboratory. The results of this report relate only to the material or product analyzed. Test results are confidential unless explicitly waived otherwise. Accredited by a third-party accrediting body as a competent testing laboratory pursuant to ISO/IEC 17025 of the International Organization for Standardization.

D8 Organics
 3009 Louisville Ave
 Monroe, LA 71201
 sales@str8w8cannabis.com
 318-816-5970

Sample: 06-15-2022-21493
 Sample Received: 06/15/2022;
 Report Created: 06/24/2022; Expires: 06/24/2023

HDE 221129R
 Concentrate & Extracts



79.069%
 Total THC

79.069%
 Δ-9 THC

86.010%
 Total Cannabinoids

0.317%
 Total CBD

Cannabinoids

Complete

(Testing Method: HPLC, CON-P-3000)
 Date Tested: 06/15/2022

Analyte	LOD	LOQ	Mass	Mass	
	%	%	%	mg/g	
Δ-8-Tetrahydrocannabinol (Δ-8 THC)	0.0962	0.1442	4.896	48.962	<div style="width: 4.896%;"></div>
Δ-9-Tetrahydrocannabinol (Δ-9 THC)	0.0962	0.1442	79.069	790.692	<div style="width: 79.069%;"></div>
Δ-9-Tetrahydrocannabinolic Acid (THCA-A)	0.0962	0.1442	ND	ND	<div style="width: 0%;"></div>
Δ-9-Tetrahydrocannabinophorol (Δ-9-THCP)	0.0962	0.1442	ND	ND	<div style="width: 0%;"></div>
Δ-9-Tetrahydrocannabivarin (Δ-9-THCV)	0.0962	0.1442	0.265	2.654	<div style="width: 0.265%;"></div>
Δ-9-Tetrahydrocannabivarinic Acid (Δ-9-THCVA)	0.0962	0.1442	ND	ND	<div style="width: 0%;"></div>
R-Δ-10-Tetrahydrocannabinol (R-Δ-10-THC)	0.0962	0.1442	0.571	5.712	<div style="width: 0.571%;"></div>
S-Δ-10-Tetrahydrocannabinol (S-Δ-10-THC)	0.0962	0.1442	0.890	8.904	<div style="width: 0.890%;"></div>
9R-Hexahydrocannabinol (9R-HHC)	0.0962	0.1442	ND	ND	<div style="width: 0%;"></div>
9S-Hexahydrocannabinol (9S-HHC)	0.0962	0.1442	ND	ND	<div style="width: 0%;"></div>
Tetrahydrocannabinol Acetate (THCO)	0.0962	0.1442	ND	ND	<div style="width: 0%;"></div>
Cannabidivarin (CBDV)	0.0962	0.1442	ND	ND	<div style="width: 0%;"></div>
Cannabidivarinic Acid (CBDVA)	0.0962	0.1442	ND	ND	<div style="width: 0%;"></div>
Cannabidiol (CBD)	0.0962	0.1442	0.317	3.173	<div style="width: 0.317%;"></div>
Cannabidiolic Acid (CBDA)	0.0962	0.1442	ND	ND	<div style="width: 0%;"></div>
Cannabigerol (CBG)	0.0962	0.1442	ND	ND	<div style="width: 0%;"></div>
Cannabigerolic Acid (CBGA)	0.0962	0.1442	ND	ND	<div style="width: 0%;"></div>
Cannabinol (CBN)	0.0962	0.1442	<LOQ	<LOQ	<div style="width: 0%;"></div>
Cannabinolic Acid (CBNA)	0.0962	0.1442	ND	ND	<div style="width: 0%;"></div>
Cannabichromene (CBC)	0.0962	0.1442	ND	ND	<div style="width: 0%;"></div>
Cannabichromenic Acid (CBCA)	0.0962	0.1442	ND	ND	<div style="width: 0%;"></div>
Total			86.010	860.097	

Total THC = THCa * 0.877 + Δ9-THC; Total CBD = CBDa * 0.877 + CBD; LOQ = Limit of Quantitation; ND = Not Detected.

Total THC Measurement of Uncertainty: ± 0.040%
 Total CBD Measurement of Uncertainty: ± 2.000%
 THCO potency analysis does not designate quantitative specificity of Δ-8-THCO and Δ-9-THCO isomers



New Bloom Labs
 6121 Heritage Park Drive, A500
 Chattanooga, TN 37416
 (844) 837-8223
 TN DEA#: RN0563975

Natalie Siracusa
 Natalie Siracusa
 Laboratory Director

New Bloom Labs
 10606 Shady Trail, 105
 Dallas, TX 75520
 (844) 837-8223
 TX DEA#: RN0594653

Powered by
 reLIMS
 info@relims.com

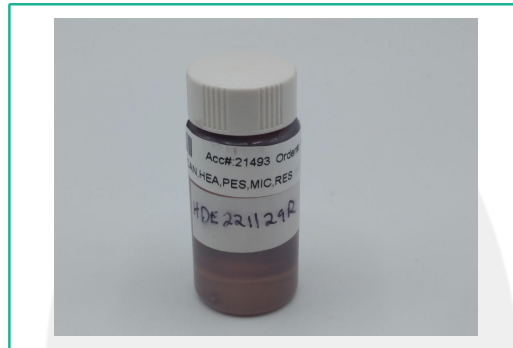
D8 Organics

3009 Louisville Ave
 Monroe, LA 71201
 sales@str8w8cannabis.com
 318-816-5970

Sample: 06-15-2022-21493

Sample Received: 06/15/2022;
 Report Created: 06/24/2022; Expires: 06/24/2023

HDE 221129R
 Concentrate & Extracts



Heavy Metals


(Method of Analysis: ICP/MS, CON-P-7000)

Date Tested: 06/16/2022

Analyte	LOQ	Mass
	PPM	PPM
Arsenic	0.0971	<0.0971
Cadmium	0.0971	<0.0971
Chromium	0.2427	<0.2427
Lead	0.0971	<0.0971
Mercury	0.0971	<0.0971
Selenium	0.0971	<0.0971



New Bloom Labs
 6121 Heritage Park Drive, A500
 Chattanooga, TN 37416
 (844) 837-8223
 TN DEA#: RN0563975


 Natalie Siracusa
 Laboratory Director

New Bloom Labs
 10606 Shady Trail, 105
 Dallas, TX 75520
 (844) 837-8223
 TX DEA#: RN0594653

Powered by
 reLIMS
 info@relims.com

D8 Organics

3009 Louisville Ave
 Monroe, LA 71201
 sales@str8w8cannabis.com
 318-816-5970

Sample: 06-15-2022-21493

Sample Received: 06/15/2022;
 Report Created: 06/24/2022; Expires: 06/24/2023

HDE 221129R
 Concentrate & Extracts



Pesticides


(Testing Method: LC/MS/MS, CON-P-5000)

Date Tested: 06/15/2022

Analyte	LOQ	Mass	Analyte	LOQ	Mass
	PPM	PPM		PPM	PPM
Acephate	0.200	<0.200	Imazalil	0.100	<0.100
Acequinocyl	1.000	<1.000	Imidacloprid	0.200	<0.200
Acetamiprid	0.100	<0.100	Kresoxim Methyl	0.200	<0.200
Aldicarb	0.200	<0.200	Malathion	0.100	<0.100
Avermectin B1A	0.200	<0.200	Metalaxyl	0.100	<0.100
Avermectin B1B	0.050	<0.050	Methiocarb	0.100	<0.100
Azoxystrobin	0.100	<0.100	Methomyl	0.200	<0.200
Bifenazate	0.100	<0.100	MGK-264	0.100	<0.100
Bifenthrin	0.100	<0.100	Myclobutanil	0.100	<0.100
Boscalid	0.200	<0.200	Propoxur	0.100	<0.100
Carbaryl	0.100	<0.100	Oxamyl	0.500	<0.500
Carbofuran	0.100	<0.100	Naled	0.250	<0.250
Chlorantraniliprole	0.100	<0.100	Paclobutrazole	0.200	<0.200
Chlorpyrifos	0.100	<0.100	Parathion Methyl	0.100	<0.100
Clofentazine	0.100	<0.100	Permethrin	0.100	<0.100
Cyfluthrin	0.500	<0.500	Phosmet	0.100	<0.100
Cypermethrin	0.500	<0.500	Piperonyl Butoxide	1.000	<1.000
Daminozide	0.500	<0.500	Prallethrin	0.100	<0.100
Diazinon	0.100	<0.100	Propiconazole	0.200	<0.200
Dichlorvos (DDPV)	0.050	<0.050	Pyrethrins	0.500	<0.500
Dimethoate	0.100	<0.100	Pyridaben	0.100	<0.100
Ethoprophos	0.100	<0.100	Spinosad A	0.050	<0.050
Etofenprox	0.200	<0.200	Spinosad D	0.050	<0.050
Etoxazole	0.100	<0.100	Spiromesifen	0.100	<0.100
Fenoxycarb	0.100	<0.100	Spirotetramat	0.100	<0.100
Fenpyroximate	0.200	<0.200	Spiroxamine	0.200	<0.200
Fipronil	0.200	<0.200	Tebuconazole	0.200	<0.200
Flonicamid	0.500	<0.500	Thiacloprid	0.100	<0.100
Fludioxonil	0.200	<0.200	Thiamethoxam	0.100	<0.100
Hexythiazox	0.500	<0.500	Trifloxystrobin	0.100	<0.100



New Bloom Labs
 6121 Heritage Park Drive, A500
 Chattanooga, TN 37416
 (844) 837-8223
 TN DEA#: RN0563975


 Natalie Siracusa
 Laboratory Director

New Bloom Labs
 10606 Shady Trail, 105
 Dallas, TX 75520
 (844) 837-8223
 TX DEA#: RN0594653

Powered by
 reLIMS
 info@relims.com

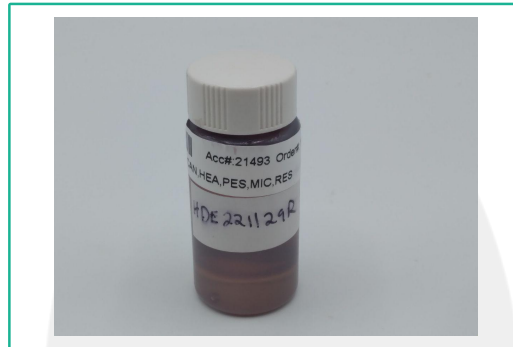
D8 Organics

3009 Louisville Ave
 Monroe, LA 71201
 sales@str8w8cannabis.com
 318-816-5970

Sample: 06-15-2022-21493

Sample Received: 06/15/2022;
 Report Created: 06/24/2022; Expires: 06/24/2023

HDE 221129R
 Concentrate & Extracts




Microbials

(Testing Method: qPCR & 3M Petrifilm & SIM Plate, CON-P-6000, CON-P-9000)
 Date Tested: 06/16/2022

Analyte	LOQ	Units
	CFU/g	CFU/g
Total Yeast and Mold Count	22	<22
Total Aerobic Bacteria Count	9	<9
Total Coliform Count	9	<9
Total Enterobacteriaceae/BTGN Count	9	<9
Aspergillus spp.		Not Detected
Shigatoxigenic Escherichia coli (STEC)		Not Detected
Salmonella		Not Detected
Listeria monocytogenes		Not Detected



New Bloom Labs
 6121 Heritage Park Drive, A500
 Chattanooga, TN 37416
 (844) 837-8223
 TN DEA#: RN0563975


 Natalie Siracusa
 Laboratory Director

New Bloom Labs
 10606 Shady Trail, 105
 Dallas, TX 75520
 (844) 837-8223
 TX DEA#: RN0594653

Powered by
 reLIMS
 info@relims.com

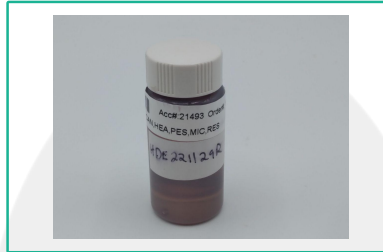
D8 Organics

3009 Louisville Ave
 Monroe, LA 71201
 sales@str8w8cannabis.com
 318-816-5970

Sample: 06-15-2022-21493

Sample Received: 06/15/2022;
 Report Created: 06/24/2022; Expires: 06/24/2023

HDE 221129R
 Concentrate & Extracts



Residual Solvents

(Testing Method: HS-GC/MS, CON-P-8000)
 Date Tested: 06/15/2022

Analyte	LOQ	Mass	Analyte	LOQ	Mass
	PPM	PPM		PPM	PPM
1,2 Dichloroethane	2.000	<2.000	Ethyl Acetate	1000.000	<1000.000
1,2 Dimethoxyethane	20.000	<20.000	Ethyl Ether	1000.000	<1000.000
1,4 Dioxane	100.000	<100.000	Hexane	200.000	<200.000
1,2,3,4 Tetrahydronaphthalene	20.000	<20.000	Isobutanol	1000.000	<1000.000
1,1,1 Trichloroethane	10.000	<10.000	n-Propanol	1000.000	<1000.000
2 Ethoxyethanol	20.000	<20.000	n-Butanol	1000.000	<1000.000
2 Hexanone	20.000	<20.000	Nitromethane	10.000	<10.000
2 Propanol	1000.000	<1000.000	n-Heptane	1000.000	<1000.000
Acetone	1000.000	<1000.000	n-Pentane	1000.000	<1000.000
Acetonitrile	100.000	<100.000	o-Xylene	100.000	<100.000
Benzene	1.000	<1.000	tert-Butanol	1000.000	<1000.000
Chlorobenzene	100.000	<100.000	Tetrahydrofuran	100.000	<100.000
Dichloromethane	100.000	<100.000	Toluene	100.000	<100.000
Ethylbenzene	100.000	<100.000	trans 1,2 Dichloroethene	100.000	<100.000
Ethanol	1000.000	<1000.000	Trichloroethene	20.000	<20.000